

Tango+ Toyota: Smart Systems 2018+

I. Overview

Supported Smart System types

In current Tango software version (1.125), dozens of Toyota/Lexus locked Smart ECUs (2017-2022) are supported for "All Keys Lost". These span between 2017-2022 and apply to Toyota/Lexus DST AES smart systems using Page 1 **A8**, **A9** & **AA** keys. Coverage of vehicle models like, but not limited to, Camry, CH-R, Land Cruiser, Lexus ES, LX570, Prius, RAV4, RH450, RX350, etc.

All functions of Tango+ Toyota are performed **directly through the OBD port** of the vehicle via J2534 PassThru, **without need for physical access** to separate ECUs or additional wiring.

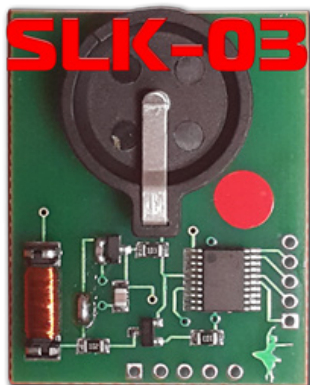
Requirements

- Tango programmer
- J2534 compliant PassThru OBD Adapter
- SLK-03/03E/04/04E/07 emulator
- Toyota maker*
- SLK-03/04/07 maker*
- Corresponding additional activation for the paid models (CHR, Prius, subscription, etc...)

* Functionality is **included** in Tango annual subscription.

SLK Emulators

Page1	Logic	Orig. Chip	Emulator	Color Code
A8	DST AES	TMS37200	SLK-03	Red
A9	DST AES	RF430	SLK-04	White
AA	DST AES	RF430	SLK-07	Gold



II. Procedure

How To make a Smart Key

Briefly explained the goal of this software is to create a "dummy key" and get permission by the vehicle to register new Smart Keys in All Keys Lost situation.

The learning procedure consists of the two steps:

- Make the dummy key (emulator)
- Register new SmartKey(s)

Operating Procedure

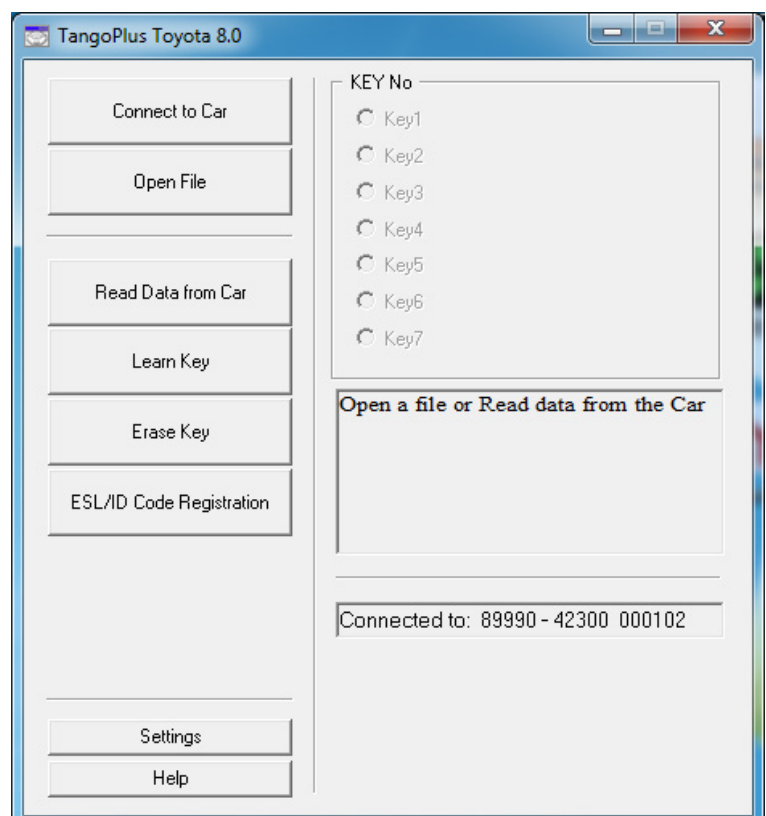
1. Connect the **J2534 Pass Thru** adapter **directly** to the vehicle's **OBD port** and to a PC
2. Connect Tango to the PC
3. Run the Tango+ Toyota.exe (double click on the icon, or start from Tango main software)
4. Click the **Connect to Car** button
5. Press **Read Data from Car**
6. Select Key position (KEY No: KEY1/KEY2/etc..)
7. Place the SLK-0x Emulator in Tango coil (make sure it has a battery)
8. Press **Write Emulator**
9. Once emulator is written it can be used to authorize the standard diagnostic procedure for Key addition Tango+ Toyota-> Connect to Vehicle->Learn Key.

III. Additional functions

After connection to vehicle with Tango+ Toyota through the OBD plug, the following additional functions are available:

- Key Learn (including online types)*
- Erase Keys(including online types)*
- Register ID code & ESL

** For online models read data from a Smart Box using TangoPlus is required.*



IV. Appendix

Alternative Connection diagrams

As of Tango+ Toyota update ver. 9.0 (October 2022) connection to vehicle is done **directly** through the **OBD** port of the vehicle. The following connection methods, remain alternative, particularly if on hand is only the Smart ECU and work on bench is needed.

1. Connection on bench

